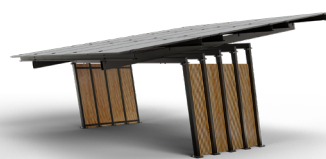


EV CARPORT



EV02

TWO-STATION CARPORT

ABOUT CARPORT

This model will suit the most demanding customers who value high standard finish. Design and simplicity in one. CARPORT has been designed to resemble modern facades, which suit any modern house perfectly.

CERTIFICATES



Factory
Production
Control
EN 1090-1

www.ev-car.com
ID: 3000000392



Quality
Requirements
Acc. to ISO 3834
Part 2
ISO 3834-2:2007

www.ev-car.com
ID: 3000000392



AVAILABLE COLORS



white grey black

- powder painting,
- anti-corrosion layer, hot-dip galvanized
- Other colors available upon request.



panel mounting
system



steel
poles

EV 02 CARPORT MODELS

- EV_02_standard_plus
(hot-dip galvanization, powder coating)

ADDITIONAL INFORMATION

- Compatible with photovoltaic modules up to 10 kW
- Our innovative system provides for the installation of both glass panels as well as those with aluminum frames.

Double carport - 15 panels

(panel dimensions 2285 mm x 1134 mm x 35 mm)

EV02

TWO-STATION CARPORT

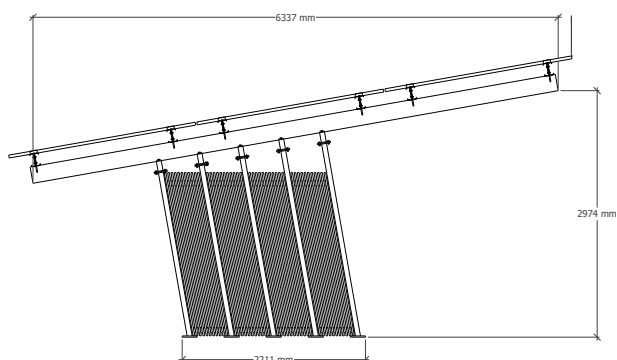
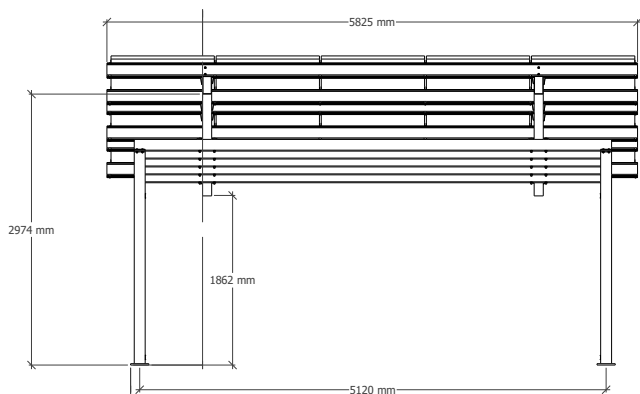


CONSTRUCTION STANDARDS

PN-EN 1090-1:2009+A1:2011
2627-CPR-1090-1.PL0131.TÜVRh.21.00
PN-EN 1991-1-3
PN-EN 1991-1-4
PN-EN 1991-1-1:2006P
PN-EN 1991-1-3:2008P
PN-EN 1991-1-5:2008P
PN-EN ISO 3834-2:2007
Calculations for 3 wind zones and 3 snow zones

ADDITIONAL RANGE

- LED lighting of poles



STRUCTURAL PARAMETERS

Material	Hot - dip galvanized steel, powder painted
Color	Anthracite, black, white
Number of stations	2
Number of modules	up to 15 modules
The possibility of using modules	from 1776 x 1052 to 2285 x 1130
Mocowanie modułów	universal system
Fastening to the ground	foundations according to the attached project
Including:	steel structure + connecting elements

DIMENSIONS

Roof dimensions	6337 mm x 5825 mm
Parking space dimensions	5000 mm x 5000 mm

